

Chromium

Oxide Powder



APS
40-60µm

NS6130-12-000901



Follow us:



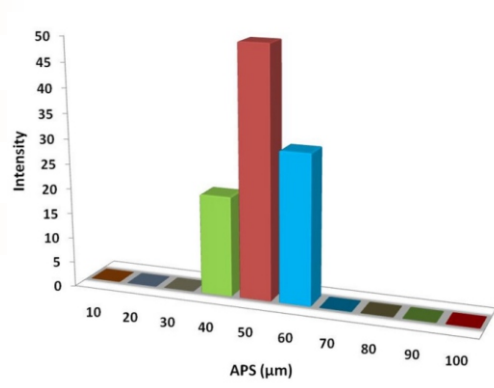
| www.nanoshel.com | sales@nanoshel.com

Chromium Oxide Powder

Chromium oxide is a well-known catalyst for the complete oxidation of chlorinated hydrocarbons due to its high removal activity. The commercial application of this catalytic system, however, has been limited by fear about the evaporation of Cr during the course of reaction, especially at high feed concentrations of chlorinated compounds in the feed gas system. Chromium Oxide powder is used as a pigment, It is used in paints, inks, and glasses. It is used as a precursor for magnetic pigments. Chromium Oxide powder is also used a thermal spray material for protecting the underlying metal surface, and as an additive to corrosion resistant and wear resistant materials. Chromium Oxide powder are used in coatings of bearings, seals, orifices, and valve seals. Special attention has been focused on the formation and properties of chromium oxide (Cr₂O₃), which is important in specific applied applications such as in high temperature resistant materials, corrosive resistant materials, liquid crystal displays, green pigment, catalysts and so on.

Quick Facts

Product	:	Chromium Oxide Powder
Stock No	:	NS6130-12-000901
CAS	:	1308-38-9
Purity	:	99.95+%
Color	:	Black/Green
Form	:	Powder



Technical Specification

Formula	APS	Molecular Weight	Melting Point
Cr ₂ O ₃	40-60μm	151.99g/mol	2435 °C

Chemical Composition

Product	Weight Percent (nominal)	
	Cr ₂ O ₃	Other Metal
Chromium Oxide Powder	99.95+%	0.1%

Applications

- In glasses, inks and paints
- As the colorant in 'chrome green' and 'institutional green'
- Precursor to the magnetic pigment (chromium dioxide)
- In the process of stopping knives.

INTELLIGENT MATERIALS PVT LTD

Derabassi
Punjab (140507)
INDIA

+91 9779 550077, 9779238252

NANOSHEL UK LIMITED

Chapel House,
Chapel St Cheshire,
CW12 4AB United Kingdom

+44 1782 454 144, +44 74 105 48802

NANOSHEL LLC

3422 Old Capitol Suit
1305 Wilmington DE - 19808
United States

+1 646 470 4911

ISO 9001:2015
CERTIFIED COMPANY



20ZICE4589C



19ZAZGO1274G



20ZICE4588M

