

LEAD OXIDE NANOPOWDER







Purity
99.9%

Pb₂O₃

NS6130-03-395

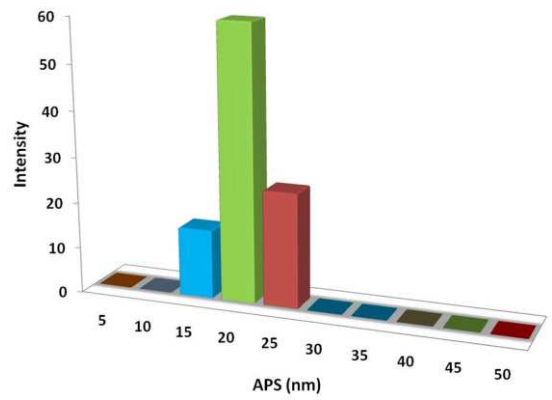


Follow us:

    | www.nanoshel.com | sales@nanoshel.com

LEAD OXIDE NANOPOWDER

Lead oxide is available in two crystal structures such as tetragonal and orthorhombic crystal structure. This compound has been used in various industries such as glass, ceramics and computer components. This compound is an amphoteric compound. It is an industrial material due to it shows distinct properties for instance electronic, mechanical and optical properties. This compound has many applications as network-modifiers in luminescent glassy materials, paints, sensors such as gas sensors, pigments. It is also employed in batteries for instance lead acid batteries, lithium secondary batteries. It is synthesized by various methods such as thermal decomposition, spray pyrolysis, selected control synthesis, hydrothermal synthesis; sonochemical microwave irradiation etc. this compound is also employed in waterproof cements and in paints.



ADDITIONAL POWDER CHARACTERISTICS

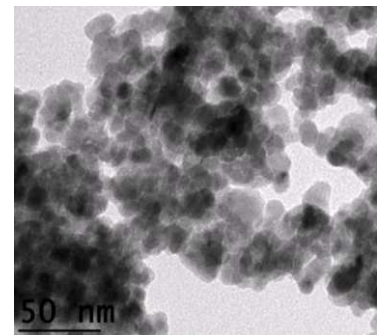
Stock No.	Purity	APS
NS6130-03-395	99.9%	20-30nm

TECHNICAL SPECIFICATION

Molecular Formula	Molecular Weight	Density	Melting Point
Pb ₂ O ₃	223.2 g/mol	9.53 g/cm ³	888 °C

CHEMICAL COMPOSITION

Product	Weight Percent (nominal)	
	Pb ₂ O ₃	Other Metal
Lead Oxide Nanopowder	99.9%	1000ppm



APPLICATIONS

- > Used in Glass industry
- > Utilized in ceramic industry
- > Employed in automotive lead-acid batteries
- > Used in cathode ray tube

QuickFACTS

Product	:	Lead Oxide Nanopowder
Stock No	:	NS6130-03-395
CAS	:	1317-36-8
Color	:	Red or Yellow Crystalline Solid
Form	:	Powder
Symbol	:	Pb ₂ O ₃



20ZICE4589C



19ZAZGO1274G



20ZICE4588M

ISO 9001:2015
CERTIFIED COMPANY

INTELLIGENT MATERIALS PVT LTD
Derabassi
Punjab (140507)
INDIA

+91 9779 550077, 9779238252

NANOSHEL UK LIMITED
Chapel House,
Chapel St Cheshire,
CW12 4AB United Kingdom

+44 1782 454 144, +44 74 105 48802

NANOSHEL LLC
3422 Old Capitol Suit
1305 Wilmington DE - 19808
United States

+1 646 470 4911