

LITHIUM MANGANESE POWDER

Stock No: NS6130-05-540



Follow us:



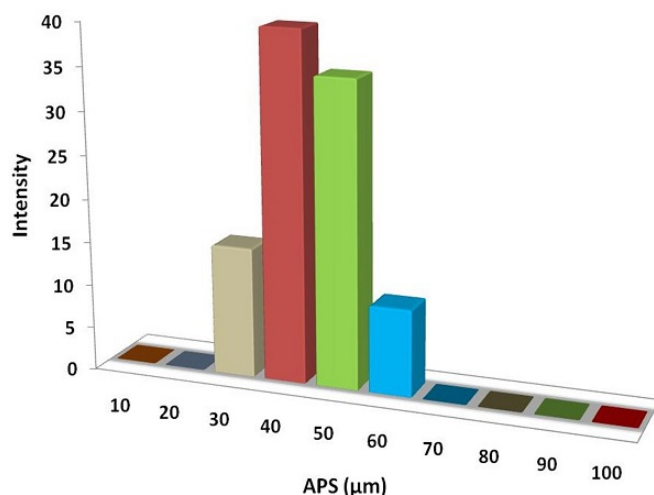
| www.nanoshel.com | sales@nanoshel.com

Lithium Manganese Powder

Lithium Manganese Oxide (LiMn₂O₄) Spinel Cathode has the chemical formula of LiMn₂O₄. It has a spinel structure. In addition to containing inexpensive materials, the three-dimensional structure of LiMn₂O₄ lends itself to high rate capability by providing well connected framework for the insertion and de-insertion of Li⁺ ions during discharge and charge of the battery. Because of this structural arrangement, lithium ion batteries based on LiMn₂O₄ cathodes have demonstrated a higher rate-capability compared to materials with two-dimensional frameworks for Li⁺ diffusion.

Quick Facts

Product	: Lithium Manganese Powder
Color	: Black Pow
Stock No	: NS6130-05-540
CAS	: 12057-17-9
Purity	: 99%
APS	: 40-50µm
Other Metal	: 8500ppm



Technical Specification

Molecular Formula	Molecular Weight	Density	Melting Point
LiMn ₂ O ₄	180.81g/mol	4.1g/cm ₃	400°C

Applications

- Camcorders
- Digital still cameras
- OA machines (fax, copies, printers)
- Medical instruments, cash registers
- batteries for electrical energy storage

ISO 9001:2015
 CERTIFIED COMPANY



INTELLIGENT MATERIALS PVT LTD
 Derabassi
 Punjab (140507)
 INDIA

+91 9779 550077, 9779238252

NANOSHEL UK LIMITED
 Chapel House,
 Chapel St Cheshire,
 CW12 4AB United Kingdom

+44 1782 454 144, +44 74 105 48802

NANOSHEL LLC
 3422 Old Capitol Suit
 1305 Wilmington DE - 19808
 United States

+1 646 470 4911

