

SODIUM OXIDE NANOPOWDER



Purity
99.9%



NS6130-12-000173

NEXT

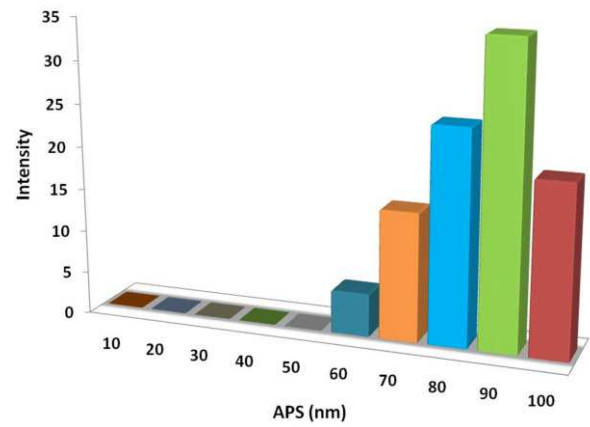


Follow us:

| www.nanoshel.com | sales@nanoshel.com

SODIUM OXIDE NANOPOWDER

Sodium oxide is a chemical compound and its formula is Na_2O_3 . It is utilized in ceramics and glasses and it is not used in a raw form. It is helped to produce the base anhydride of sodium hydroxide. Sodium oxide is an important component of glasses and windows while it is added in the form of "soda" (sodium carbonate). Sodium oxide does not directly exist in glasses, since glasses are complex cross-linked polymers. Usually, produced glass contains around 15% sodium oxide, 70% silica (silicon dioxide) and 9% lime (calcium oxide).



ADDITIONAL POWDER CHARACTERISTICS

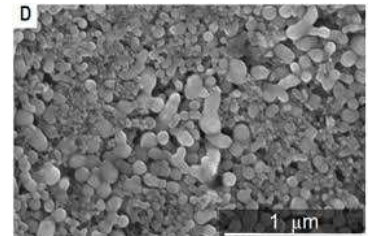
Stock No.	Purity	APS
NS6130-12-000173	99.9%	<100nm

TECHNICAL SPECIFICATION

Molecular Formula	Molecular Weight	Density	Melting Point
Na_2O_3	54.98 g/mol	2.28 g/cm ³	1132 °C

CHEMICAL COMPOSITION

Product	Weight Percent (nominal)	
	Na_2O_3	Other Metal
Sodium Oxide Nanopowder	99.9%	1000ppm



APPLICATIONS

- > Used in Ceramics
- > Utilized in Glasses

QuickFACTS

Product	:	Sodium Oxide Nanopowder
Stock No	:	NS6130-12-000173
CAS	:	1313-59-3
Color	:	Yellow Crystalline Solid
Form	:	Powder
Symbol	:	Na_2O_3



20ZICE4589C



19ZAZGO1274G



20ZICE4588M

ISO 9001:2015
CERTIFIED COMPANY

INTELLIGENT MATERIALS PVT LTD
Derabassi
Punjab (140507)
INDIA

+91 9779 550077, 9779238252

NANOSHEL UK LIMITED
Chapel House,
Chapel St Cheshire,
CW12 4AB United Kingdom

+44 1782 454 144, +44 74 105 48802

NANOSHEL LLC
3422 Old Capitol Suit
1305 Wilmington DE - 19808
United States

+1 646 470 4911