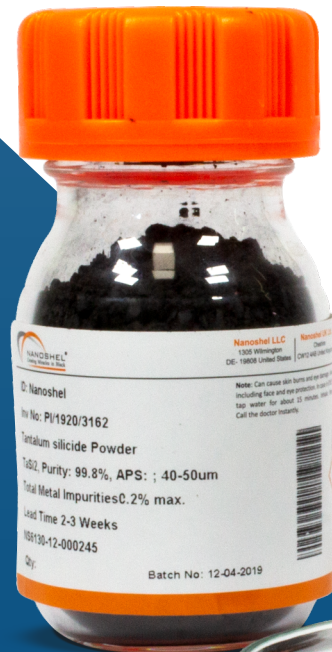


# TANTALUM SILICIDE POWDER

Stock No: NS6130-12-000245



TaSi<sub>2</sub>



Follow us:



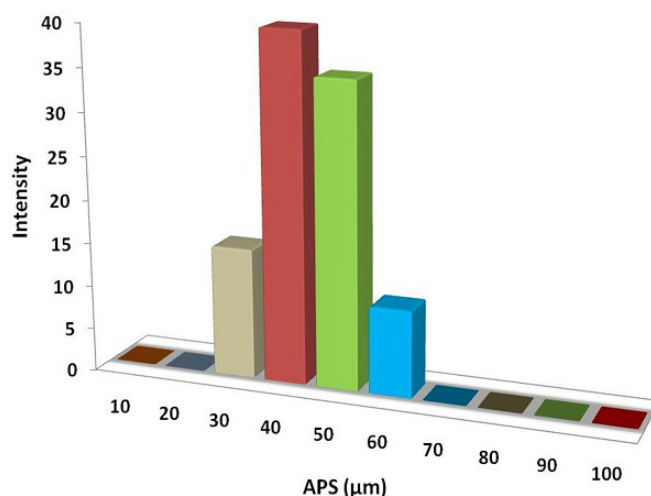
| [www.nanoshel.com](http://www.nanoshel.com) | [sales@nanoshel.com](mailto:sales@nanoshel.com)

## Tantalum Silicide Powder

In very-large-scale integration technology, tantalum silicide has been proposed to be useful in a variety of applications. Tantalum (Ta) is a dark blue-gray metal that is very heavy, ductile and hard and has high corrosion resistance. Tantalum silicide (TaSi<sub>2</sub>) has an attractive combination of properties, including a high melting point, high thermal stability, low electrical contact resistance, a high modulus of elasticity, a high resistance to oxidation in air and a good compatibility with silicon. Due to its low electrical resistance and oxidation resistance, TaSi<sub>2</sub> has been utilized in switching devices as Schottky barriers, ohmic contacts.

### Quick Facts

Product	:	Tantalum Silicide Powder
Color	:	Gray/black Powder
Stock No	:	NS6130-12-000245
CAS	:	12039-79-1
Purity	:	99.9%
APS	:	40-50µm
Other Metal	:	8500ppm



## Technical Specification

Molecular Formula	Molecular Weight	Density	Melting Point
TaSi <sub>2</sub>	237.12 g/mol	9.14 g/cm <sub>3</sub>	2200 °C

## Applications

- Capacitors such as planar cells, trench cells (e.g., double sidewall trench capacitors)
- Stacked cells (e.g., crown, V-cell, delta cell, multi-fingered, or cylindrical container stacked capacitors)
- Field effect transistor devices
- Used in ceramic materials, electrode materials, thin film materials and refractory

ISO 9001:2015  
CERTIFIED COMPANY



**INTELLIGENT MATERIALS PVT LTD**  
Derabassi  
Punjab (140507)  
INDIA

+91 9779 550077, 9779238252

**NANOSHEL UK LIMITED**  
Chapel House,  
Chapel St Cheshire,  
CW12 4AB United Kingdom

+44 1782 454 144, +44 74 105 48802

**NANOSHEL LLC**  
3422 Old Capitol Suit  
1305 Wilmington DE - 19808  
United States

+1 646 470 4911

