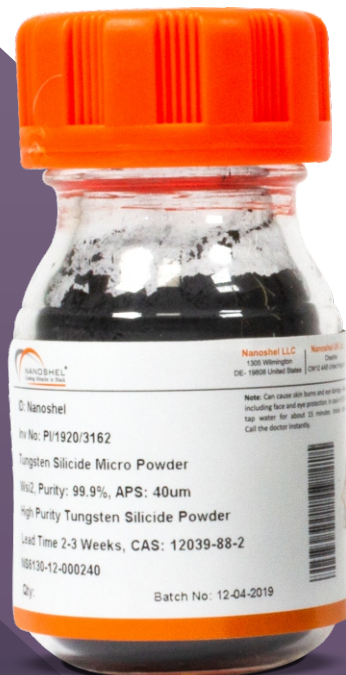


# TUNGSTEN SILICIDE POWDER

Stock No: NS6130-12-000240



$WSi_2$



Follow us:



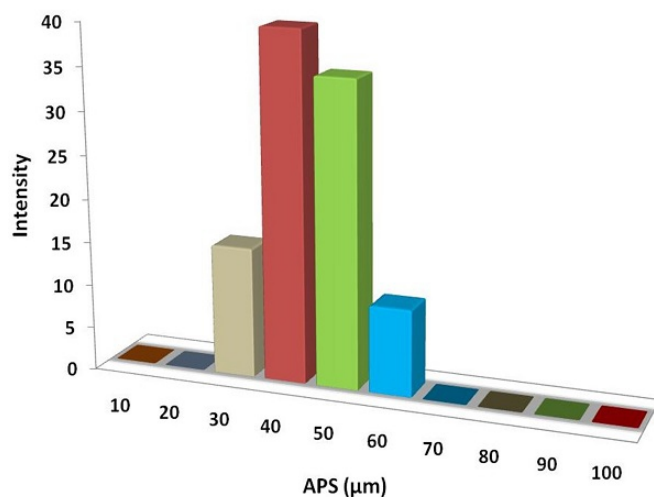
| [www.nanoshel.com](http://www.nanoshel.com) | [sales@nanoshel.com](mailto:sales@nanoshel.com)

## Tungsten Silicide Powder

Tungsten silicide ( $WSi_2$ ) is an inorganic compound, a silicide of tungsten. It is an electrically conductive ceramic material. Tungsten silicide powder has high melting point, high corrosion resistance, high oxidation resistance, good electrical conductivity, high temperature ductility. Tungsten silicide is a replacement for earlier tungsten films. Tungsten silicide is also used as a barrier layer between silicon and other metals, e.g. tungsten. Tungsten silicide also finds use in microelectromechanical systems and for oxidation-resistant coatings. The tungsten silicide powder market can be segmented into integrated circuits, components, transistors, microelectronics, wafers for semiconductors, barrier layers, and photovoltaics.

### Quick Facts

Product	: Tungsten Silicide Powder
Color	: Blue/Gray Powder
Stock No	: NS6130-12-000240
CAS	: 12039-88-2
Purity	: 99.9%
APS	: 40 $\mu$ m
Other Metal	: 950ppm



## Technical Specification

Molecular Formula	Molecular Weight	Density	Melting Point
$WSi_2$	240.011 g/mol	9.3g/cm <sub>3</sub>	2160 °C

## Applications

- Microelectromechanical systems and for oxidation-resistant coatings
- Circuits, components, transistors, microelectronics,
- Wafers for semiconductors, barrier layers

ISO 9001:2015  
 CERTIFIED COMPANY



**INTELLIGENT MATERIALS PVT LTD**  
 Derabassi  
 Punjab (140507)  
 INDIA

+91 9779 550077, 9779238252

**NANOSHEL UK LIMITED**  
 Chapel House,  
 Chapel St Cheshire,  
 CW12 4AB United Kingdom

+44 1782 454 144, +44 74 105 48802

**NANOSHEL LLC**  
 3422 Old Capitol Suit  
 1305 Wilmington DE - 19808  
 United States

+1 646 470 4911

